

Hunters Hill Sailing Club

2023-24 Series comprising:

2023-24 Club Championship Series

2023-24 Point Score Scratch Series

2023-24 Point Score Handicap Series

SAILING INSTRUCTIONS

3 September 2023 – 7 April 2024

Organising Authority:

Hunters Hill Sailing Club Inc.

Merrington Place

Woolwich NSW 2110

SAILING INSTRUCTIONS

1 RULES

- 1.1 Each Series will be governed by the rules as defined in the Racing Rules of Sailing (RRS).
- 1.2 The Prescriptions and Special Regulations of Australian Sailing, and class rules will apply.

2 NOTICES TO COMPETITORS

- 2.1 Notices to competitors will be posted on the official notice board located on the western wall inside the HHSC boatshed.
- 2.2 General communications to members / competitors (e.g. the racing program, the calendar, volunteer rosters and other useful information) may be via the HHSC website, SMS or email).
- 2.3 Members wishing to communicate with the Club may do so by email to commodore@huntershillsailingclub.org.au

3 CHANGES TO SAILING INSTRUCTIONS

- 3.1 Any changes to these Sailing Instructions (SI's) will be posted at least 60 minutes before the warning signal of any race affected, except that any change to the schedule of races will be posted by 14:00 (Junior class) or 17:00 (Senior classes) on any race day in relation to the next scheduled race day. Class secretaries may remind boats of changes by email or other form of electronic messaging.

4 SIGNALS MADE ASHORE

- 4.1 Signals made ashore will be displayed from the HHSC flag-mast.
- 4.2 When flag AP is flown ashore prior to the scheduled time for the first warning signal, the first warning signal will be made no earlier than 15 minutes after removal of the AP flag (amends Race Signals).

5 SCHEDULE

- 5.1 Registration: Online via www.huntershillsailingclub.org.au Late registration will be accepted at any time.
- 5.2 Dates of racing are Sundays from 3 September 2023 to 7 April 2024 with a Christmas / New Year break, The schedule may be amended from time to time and published at www.huntershillsailingclub.org.au .

- 5.3 Number of races:

<u>Event</u>	<u>Class</u>	<u>Maximum races per day</u>
Point Score Scratch starts	All classes	3
Point Score Handicap starts	All classes	1
Club Championship	29er / Senior Mixed	4*
	All other classes	3*
Sprint racing and special events	As advised	As advised

* One additional race may be sailed when the total number of races to date is less than planned in this Notice of Race

- 5.4 **Junior classes:** A briefing will normally be held at or after 10:45.

The first warning signal will be displayed at or after 11:55.

- 5.5 **Senior classes:** A briefing may be held at approximately 13:30.

The first warning signal will be displayed at or after 14:25.

6 CLASS FLAGS

Junior Class / Fleet	Flag
Optimist Race Fleet	White flag with Blue Optimist Class Emblem
Techno & Techno Plus Sailboard	To be advised

Senior Class / Fleet	Flag
Flying 11 & RS Quest Fleets	White flag with Flying 11 emblem
Senior Mixed Single-handed Fleet	White flag with Laser emblem
Mirror	Red flag with Mirror emblem
Senior Mixed Two-Handed Fleet	29er class flag

All Senior Mixed Single-Handed classes will start together.

All Senior Mixed Two-Handed classes will start together.

7 RACING AREA

7.1 The racing area will be in the vicinity of HHSC.

8 THE COURSES

8.1 The courses are described in Attachment B.

8.2 Courses may be varied to suit conditions of the day, in which case details will be provided at a briefing and a change to these SI's will be posted.

8.3 Numbered flags, boards, numeral pennants, letters or flags indicating the course to be sailed will be displayed at or before the warning signal for each race.

8.4 For windward-leeward-triangular courses, a green flag or green board will be displayed at or before the warning signal for each race to indicate marks (except at a gate) are to be rounded to starboard, otherwise marks (except at a gate) are to be rounded to port.

8.5 River courses may be shortened before the start by displaying code flag 'S' at the warning signal (amends RRS 32.2).

9 MARKS

9.1 **Shore based starts** - the starting and finishing marks and the inner distance mark will be orange marks or as otherwise specified by the Principal Race Officer (PRO) at the briefing;

On water starts - the starting mark will be an orange mark. The finishing mark will have black and white check markings.

9.2 Windward/leeward marks will be as specified by the PRO.

9.3 Other course marks will be as otherwise specified by the PRO.

10 AREAS THAT ARE OBSTRUCTIONS

10.1 Boats shall not race in the area between the shore and the outermost line of permanent moorings.

10.2 Boats shall not race in Naval Prohibited Waters.

10.3 After starting, boats shall not sail across the finish line in the direction of finishing except when finishing.

11 THE START

11.1 Boats whose warning signal has not been made shall remain clear of the starting area during other boats' starting sequence.

11.2 Junior Point Score:

The starting sequence will normally be: Optimist Fleet, Techno & Techno Plus Sailboard

11.3 Junior Club Championship:

The starting sequence will normally be: Optimist Fleet, Techno & Techno Plus Sailboard

11.4 Senior classes (Point Score & Club Championships)

The starting sequence will normally be:

Mirror, Senior Mixed Single-Handed Class Fleet, Senior Mixed Two-Handed Class Fleet, Flying 11/ RS Quest Fleet.

11.5 **On water starts:** The starting line will be between the flag-mast displaying an orange flag on the Start boat and the starting mark at the port end of the line.

11.6 **Shore based starts:** The starting line will be between the HHSC flag-mast and the starting mark. An inner distance mark may be laid, in which case the starting line will be between the inner distance mark and the starting mark.

11.7 **3-minute sequence:** If code flag 'F' is displayed with the warning signal, the starting signal will be made 3 minutes after the warning signal, (2 minutes after the preparatory signal) (amends RRS26).

11.8 **Handicap starts:** Code flag 'P' will be displayed 5 minutes before the start of the handicap starting sequence, and a sound signal may be made. One minute before the starting time of each boat, her starting numeral (equal to her Club handicap) will be exhibited for one minute. The lowering of her starting numeral will be her signal to start.

11.9 Except in Club Championship races, and in addition to the actions required by RRS29.1, the race committee may inform boats that they are subject to Individual Recall by hailing their sail number (amends RRS29.1 and RRS 41).

12 CHANGE OF THE NEXT LEG OF THE COURSE

RRS 33 is deleted and replaced by:

The Race Committee may change a leg of the course that begins at a rounding mark or at a gate by changing the position of the next mark (or the finishing line). The Race Committee may signal the change by the display of flag C with repetitive sounds and a green flag for a change to starboard or a red flag for a change to port.

13 THE FINISH

13.1 **Shore based:** the finishing line will be between the HHSC flag-mast and the finishing mark.

13.2 **On water:** the finishing line will be between the flag-mast on the Start boat and the finishing mark.

14 PENALTY SYSTEM

The Two-Turns Penalty is replaced by the One-Turn Penalty (amends RRS44.1).

15 TIME LIMITS

15.1 The time limit for Junior classes is 90 minutes.

- 15.2 The time limit for Senior classes is 180 minutes (when one race is scheduled) or 90 minutes (when two or more races are scheduled).
- 15.3 For handicap starts the time limit will be calculated from the start time of the boat with the least handicap.
- 15.4 Boats failing to finish within 150% of the elapsed time of the first boat to finish will be scored a finishing time of 150% of the elapsed time of the first boat to finish, without a hearing (amends RRS 35 and A4). The Racing Committee may direct boats they are out of time and to return to the start line.

16 PROTESTS AND REQUESTS FOR REDRESS

- 16.1 Protests shall be delivered to the race committee within the protest time limit.
- 16.2 The protest time limit is 30 minutes after the race committee has completed all race management and safety duties.
- 16.3 Notices will be posted on the Official Noticeboard within 30 minutes of the protest time limit to inform competitors of hearings in which they are parties or named as witnesses.
- 16.4 Notices of protests by the race committee will be posted to inform boats under RRS 61.1(b).
- 16.5 Breaches of SI's 11.1 and 22 will not be grounds for protest by a boat. This changes RRS 60.1(a). Penalties for these breaches may be less than disqualification if the protest committee so decides.

17 SCORING

- 17.1 A boat will be eligible for Point Score and Club Championship points for races completed after her entry has been accepted.
- 17.2 **Club Championship** - Each boat shall nominate a skipper and (for Two-Handed classes) a crew prior to her first race. The nominated skipper may act as skipper or crew. A boat shall score points only when her nominated skipper is aboard.
- 17.3 **Point Score** - Each boat shall nominate a skipper and (for Two-Handed classes) a crew prior to her first race. The nominated skipper may act as skipper or crew. A boat shall score points when either her nominated skipper or crew is aboard.

SCORING - CLUB CHAMPIONSHIP

- 17.4 At least 3 boats must start at least 50% of the races to constitute a Series. Prizes will be awarded for the Club Championship as follows:
- (a) When 5 or more boats start 50% or more of the races in a Series, 1st, 2nd and 3rd places.
 - (b) When 4 boats start 50% or more of the races in a Series, 1st and 2nd places.
 - (c) When 3 boats start 50% or more of the races in a Series, 1st place.
- 17.5 RRS A9 Race Scores in a Series longer than a Regatta will apply as modified as follows:

For a Series that is held over a period longer than a regatta, a boat that attempted to sail to the starting area on that race day but did not start, did not finish, retired, or was disqualified shall be scored points for the finishing place one more than the number of boats that came to the starting area on that race day. A boat that did not come to the starting area shall be scored points for the finishing place one more than the number of boats entered in the Series.

At the time of each race, the number of boats entered in the Series will be the number of registered boats that have previously completed at least one race.

- 17.3 If a boat does not race because her nominated skipper or crew is representing HHSC at a State, Australian or World Championship in any HHSC eligible class or any other event approved in writing by the HHSC Sailing Committee she shall be scored, for each race that she misses, the lower of:
- (a) average of her prior scores in the Series (rounded to nearest 1 decimal place); if she has less than 4 prior scores then her subsequent results shall be included until she has 4 scores. In all cases DNC shall be excluded; and
 - (b) points equivalent to DNS for the race(s) at HHSC.
- 17.6 (a) If fewer than 5 races are completed, a boat's Series score will be the total of her race scores.
- (b) If 5 to 6 races are completed, a boat's Series score will be the total of her race scores excluding her worst score.
- (c) If 7 to 10 races are completed, a boat's Series score will be the total of her race scores excluding her 2 worst scores.
- (d) If 11 or more races are completed, a boat's Series score will be the total of her race scores excluding her 3 worst scores.
- 17.7 For the ILCA Open Club Championship, each boat must nominate as ILCA 7 or ILCA 6 or ILCA 4 rig and will be scored DNC for any race in which she does not sail with that rig.
- 17.8 For the Senior Mixed Single-Handed Class Club Championship, each boat must nominate in a specific class and rig configuration and will be scored DNC for any race in which she does not sail with that class and rig.
- 17.9 For the Senior Mixed Two-Handed Class Club Championship, each boat must nominate as a specific class and will be scored DNC for any race in which she does not sail in that class.
- 17.10 Scratch results will be calculated by adjusting elapsed times by reference to each boat's Australian Sailing Yardstick.

SCORING – POINT SCORE

- 17.11 At least 3 boats must start at least 12 races to constitute a Series. Prizes will be awarded for the Point Score as follows:
- (a) If 5 or more boats start at least 12 races in a Series, 1st, 2nd and 3rd places.
 - (b) If 4 boats start at least 12 races in a Series, 1st and 2nd places.
 - (c) If 3 boats start at least 12 races in a Series, 1st place.
- 17.12 The Low Point System of Appendix A will apply.
- 17.13 RRS A9 Race Scores in a Series longer than a Regatta will apply, modified as follows:
- For a Series that is held over a period longer than a regatta, a boat that attempted to sail to the starting area on that race day but did not start, did not finish, retired or was disqualified shall be scored points for the finishing place one more than the number of boats that came to the starting area on that race day. A boat that did not come to the starting area shall be scored points for the finishing place one more than the number of boats entered in the Series.*
- At the time of each race, the number of boats entered in the Series will be the number of registered boats that have previously completed at least one race.
- 17.14 For the Open ILCA Point Score, race scores will be aggregated regardless of rig sailed in each race. For the Senior Mixed Single-Handed Class Point Score, race scores will be aggregated regardless of the class and rig sailed in each race.
- 17.15 If a boat does not race because her crew is required to perform race committee duties, or because she is representing HHSC at an official event in any HHSC eligible class, she will be awarded points equal to the score for median place for that day's HHSC Point Score race(s) (amends Appendix A).
- 17.16 Each boat shall discard her worst 15% (rounded down) scores.

18 REPLACEMENT OF EQUIPMENT

- 18.1 Competitors may replace one boat during the Series and transfer to the replacement boat any accumulated points for the Point Score and Club Championship.

19 EQUIPMENT AND MEASUREMENT CHECKS

- 19.1 If required by class rules, boats shall hold a valid class measurement certificate unless approved by the Sailing Committee.
- 19.2 Boats may be inspected at any time for compliance with the class rules and Sailing Instructions.

20 ADVERTISING

Boats may be required to display advertising chosen and supplied by the organizing authority.

21 SUPPORT BOATS

Except in Club Championship races on-water coaching is permitted, subject to approval in advance by the race committee (amends RRS 41).

22 SAFETY REGULATIONS

- 22.1 Racing will be supervised by an Officer Of the Day (OOD), nominated by the Commodore. The OOD will appoint a Principal Race Officer (PRO) and on-water and shore-based assistants. The Commodore, Vice Commodore, OOD, PRO and nominated assistants shall be the race committee.
- 22.2 Competitors shall attend briefings whenever possible.
- 22.3 Boats leaving from HHSC shall sign on prior to going afloat.
- 22.4 Boats that are not leaving from HHSC shall, prior to their first warning signal, sign on by hailing their sail number to the PRO, and shall not start until they have been acknowledged.
- 22.5 Any boat that retires shall notify a member of the race committee as soon as possible.
- 22.6 Boats returning to HHSC shall sign off as soon as possible after returning to shore.
- 22.7 Boats that are not returning to HHSC shall sign off by notifying a member of the race committee prior to leaving the racing area.
- 22.8 If while racing, and in the interest of safety, a boat enters the area between the shore and the outermost line of permanent moorings she may exonerate herself by returning to the course between the same two moorings through which she entered.
- 22.9 A boat that does not sign on may be scored DNC for her first race of the day without a hearing (amends RRS 63.1).
- 22.10 A boat that does not sign off may be scored DNF for her last race of the day without a hearing (amends RRS 63.1).
- 22.11 **Junior classes:** Racing may be abandoned at an average wind speed of 20 knots or above.
- 22.12 **Senior classes:** Racing may be abandoned at an average wind speed of 25 knots or above.

23 RADIO COMMUNICATION

- 23.1 While racing, and except in an emergency, a boat shall neither make nor receive radio communications that are not available to all boats. This restriction also applies to mobile telephones and any other telecommunications device.
- 23.2 A boat may carry a GPS tracking device, to be used solely for passive data recording.

24 DISCLAIMERS OF LIABILITY & RISK WARNING

- 24.1 This Risk Warning is issued jointly by HHSC and NSW Roads & Maritime Services, pursuant to the Civil Liability Act 2002 to all persons wishing to participate in this event.
- 24.2 Competitors participate entirely at their own risk. RRS 4, Decision to Race states “the responsibility for a boat's decision to participate in a race or to continue racing is hers alone.”
- 24.3 The Organising Authority, NSW Roads & Maritime Services, their directors, officers, volunteers and sponsors:
- (a) will not accept any liability for damage or personal injury or death sustained in conjunction with or prior to, during, or after this event; and
 - (b) shall not be responsible for the seaworthiness of any boat whose entry is accepted, the adequacy of its equipment or its insurance arrangements.
- 24.4 Participants are warned that, regardless of the precautions which might be taken by reasonable and experienced persons, sailing can be a dangerous pursuit and participants are exposed to significant risk of property damage, physical harm and possibly death. These risks may include, but are not limited to:
- the extremes of weather and sea conditions;
 - the potential that control of vessels may be lost, resulting in collisions;
 - the sudden movement of the vessel at any time and the possibility that participants may fall or be thrown overboard;
 - the possibility that participants may be injured by equipment on the vessel;
 - the absence of immediate medical care and the likelihood that significant delays may occur before medical care is available;
 - exposure to the elements for extended periods.
- 24.5 The Organising Authority and NSW Maritime jointly warn participants that regardless of their best intentions, they may be unable to render assistance to participants who are in distress.
- 24.6 Participants are warned to consider all risks before deciding to participate in any sailing event.

25 INSURANCE

- 25.1 Participants are advised that HHSC's third party liability insurance cover does not extend to participants. Participants must make their own private arrangements with an insurer.
- 25.2 Each participating boat shall be insured with valid third-party liability insurance with a minimum cover of \$10,000,000. Confirmation of such insurance must be provided prior to a boat's first race.

26. PHOTOGRAPHY CONSENT

By entering this event, competitors accept that they may be photographed and/or recorded participating in the event and/or using the venue's facilities and they consent to the taking of such images and to the use, reuse, publication and republication of such images in any media, in conjunction with the competitor's name or not, without compensation and without the competitor's approval.

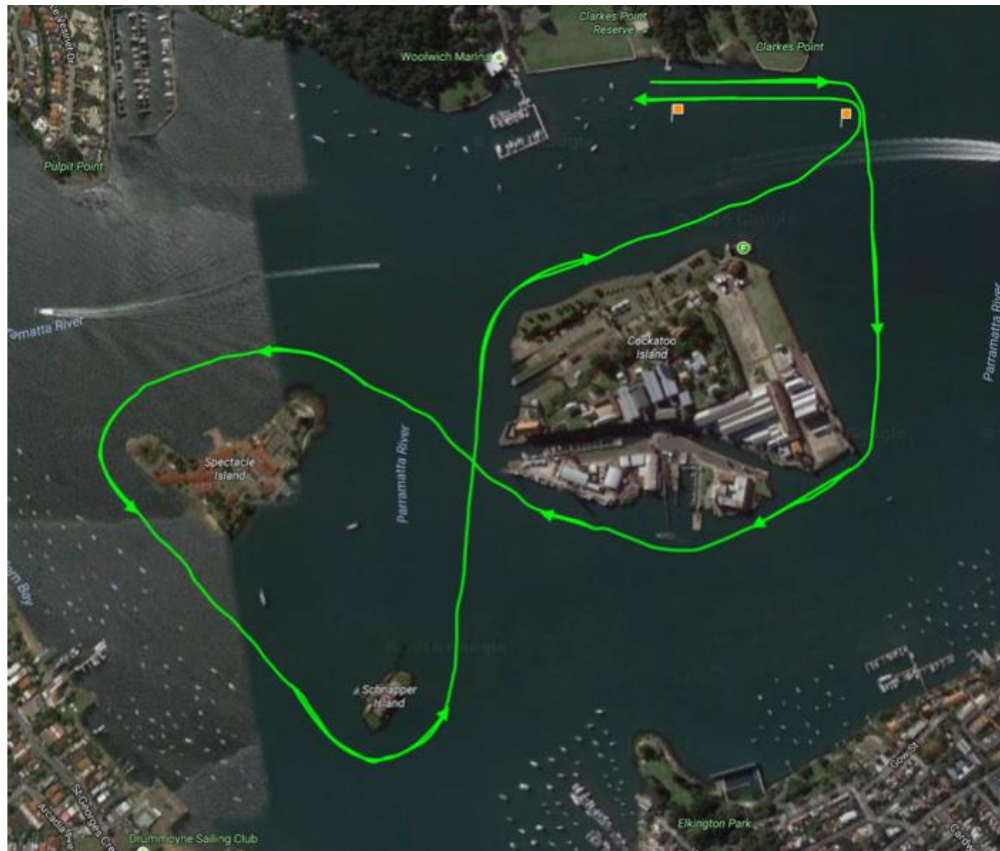
Attachment A – HHSC 2022-23 Sailing Program

As published on the HHSC Website and amended from time to time.

Version 27 August 2023

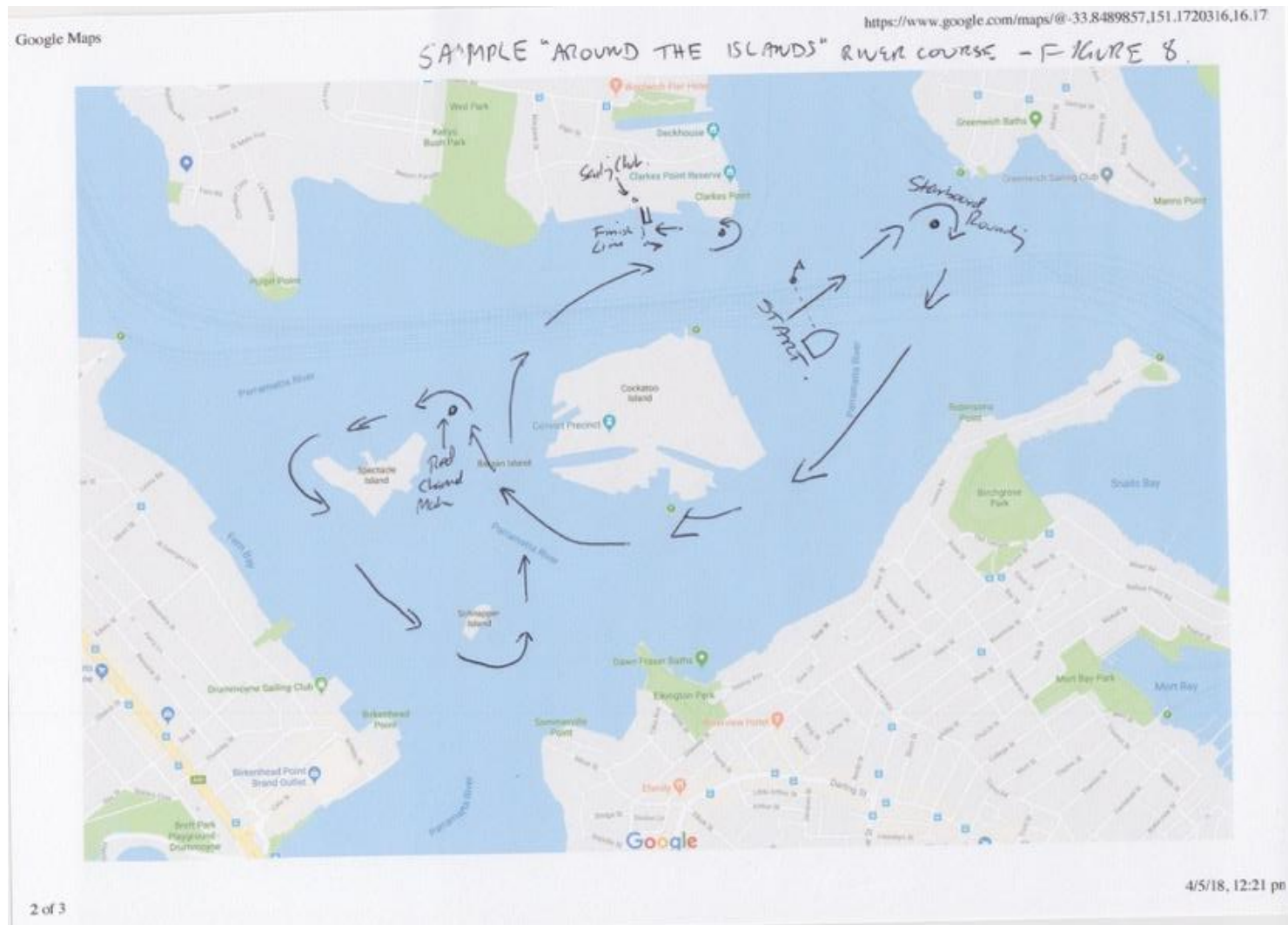
Attachment B – Courses

Club House Start Around the Islands Race with Club House Finish in a Westerly Direction.



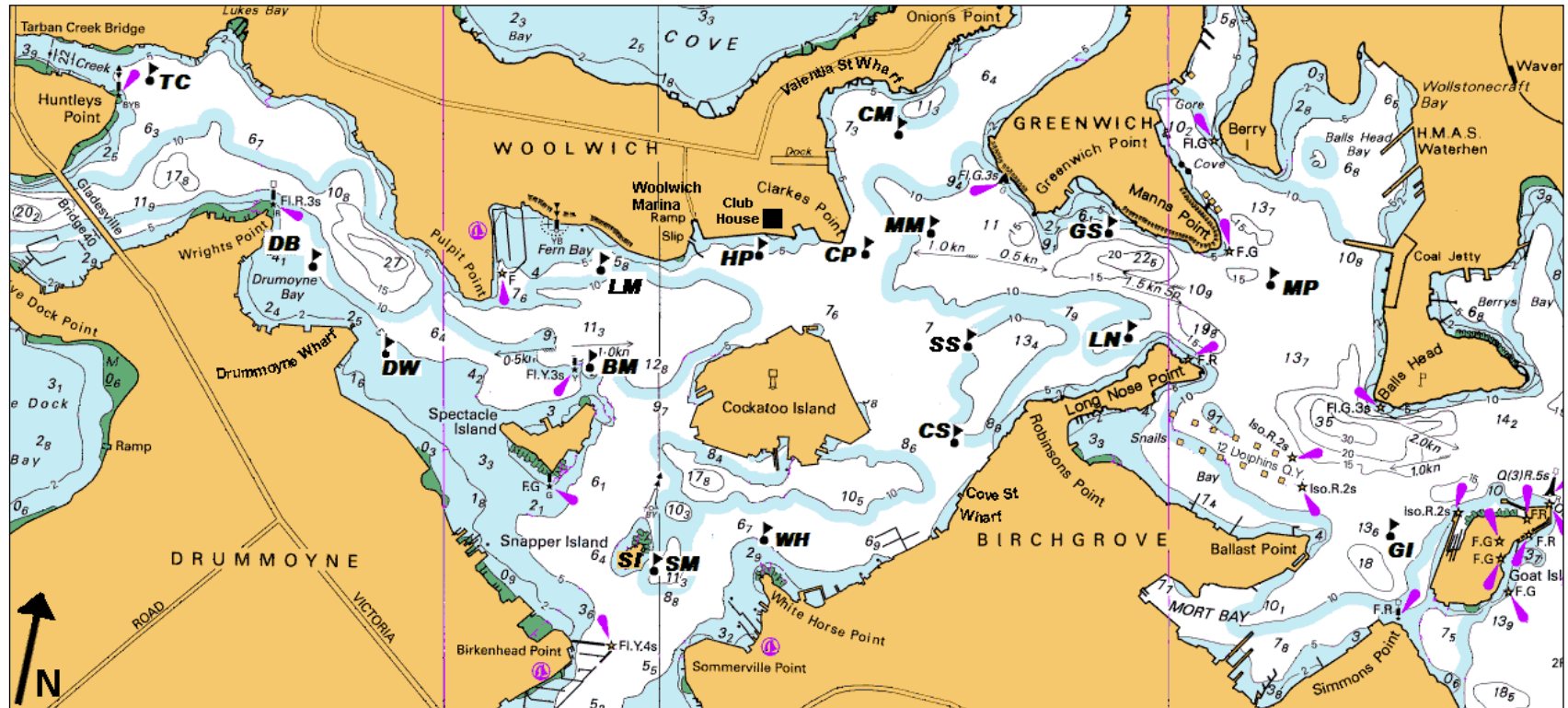
Attachment B – Courses

Boat Start Around the Islands Race, with Club House finish in a westerly direction.



Attachment B – Courses

B1 - LOCATION OF ROUNDING MARKS



Key	Name	Location
BM	Beacon	30m E of Port Channel Mark
CI	Cockatoo Island	100m East of Cockatoo Is
CM	Compass	250m south of Valencia St Wharf
CP	Clarks Point	100m ESE of Clarks Point
CS	Cove Street	100m NW of Cove Street Wharf
DB	Drummoine Bay	200m SE of Wrights Point
DW	Drummoine Wharf	250m SE of Drummoine Wharf
GI	Goat Island	200m W of Goat Island
GS	Greenwich SC	150 SW Greenwich SC ramp
HP	Horse Paddock	100m SW of HHSC ramp

Key	Name	Location
LM	Le Merle	SE Fern Bay cardinal mark
LN	Long Nose Point	100m WNW of Long Nose Point
MM	Middle Mouth	200m E of Clarks Point
MP	Manns Point	200m SE of Manns Point
SI	Snapper Island	
SM	Snapper Mark	100m E of Snapper Island wharf
SS	Ships	200m WNW of Robinson Point
TC	Tarban Creek	100m NE of Huntleys Point
WH	White Horse	100m N of White Horse Point

Attachment B – Courses

B2 – SENIOR RIVER COURSES – 1 RACE PER DAY

	Course R1 North East	Course R2 East	Course R3 South East	Course R4 South	Course R5 West	Course R6 Alternate East	Course R7 South West
Senior Mixed Single-Handed, ILCA	Start Compass (S) White Horse Manns Point Ships Manns Point Beacon ** Compass (S) White Horse Manns Point Beacon Finish	Start Manns Point Ships (S) Compass Beacon Manns Point Beacon ** Manns Point Ships (S) Compass Beacon Finish	Start Ships Compass (S) Goat Island Clarks Point Ships ** Compass (S) Goat Island Clarks Point Ships Finish	Start Snapper Is. (S) Tarban Creek Snapper Island Beacon Drum. Bay ** Snapper Island Le Merle (S) Compass (S) Ships (S) Finish	Start Drum. Wharf Compass (S) Ships (S) Drum. Wharf Compass (S) Ships (S) Drum. Wharf Ships (S) Finish	Start Long Nose Compass Drum. Wharf (S) Long Nose Drum. Wharf (S) ** Long Nose Compass Drum. Wharf (S) Finish	Start Snapper Mark Greenwich Cove Street Greenwich Compass Snapper Mark Greenwich ** Cove Street Greenwich Cove Street Greenwich Compass Finish

FLYING 11, MIRROR	Start Compass (S) White Horse Manns Point Beacon ** Compass (S) White Horse Manns Point Beacon Finish	Start Manns Point Ships (S) Compass Beacon Compass Beacon ** Manns Point Ships (S) Compass Beacon Finish	Start Ships Compass (S) Long Nose (S) Clarks Point Ships ** Compass (S) Long Nose (S) Clarks Point Ships Finish	Start Snapper Is. (S) Drum. Bay Snapper Island Beacon Drum. Bay ** Snapper Island Le Merle (S) Compass (S) Ships (S) Finish	Start Drum. Wharf Compass (S) Ships (S) Drum. Wharf Compass (S) Ships (S) ** Drum. Wharf Ships (S) Finish	Start Ships Compass Drum. Wharf (S) Ships Drum. Wharf (S) ** Ships Compass Drum. Wharf. (S) Finish	Start Snapper Mark Greenwich Cove Street Greenwich Compass ** Snapper Mark Greenwich Compass Finish
-------------------	--	---	---	---	--	---	--

Senior Mixed Two-Handed, ILCA	Start Compass (S) White Horse Manns Point Beacon Compass (S) White Horse Manns Point Beacon ** Compass (S) White Horse Manns Point Beacon Finish	Start Manns Point Ships (S) Compass Beacon Manns Point Ships (S) Compass Beacon ** Manns Point Ships (S) Compass Beacon Finish	Start Ships Compass (S) Goat Island Compass (S) Goat Island Clarks Point Ships ** Compass (S) Goat Island Clarks Point Ships Finish	Start Snapper Is. (S) Tarban Creek Snapper Island Beacon Drum. Bay Snapper Island Beacon Drum. Bay ** Snapper Island Le Merle (S) Compass (S) Ships (S) Finish	Start Drum. Wharf Snapper Island Compass (S) Ships (S) Drum. Wharf Snapper Island Compass (S) Ships (S) ** Drum. Wharf Snapper Island Compass (S) Ships (S) Finish	Start Long Nose Compass Drum. Wharf (S) Long Nose Compass Drum. Wharf (S) ** Long Nose Compass Drum. Wharf (S) Finish	Start Snapper Mark Greenwich Cove Street Greenwich Compass Snapper Mark Greenwich ** Cove Street Greenwich Compass Snapper Mark Compass Finish
-------------------------------	---	---	---	---	---	---	---

All marks to Port except where indicated (S)

** Final rounding mark when the course is shortened before the start

Attachment B – Courses

B3 – SENIOR RIVER COURSES – 2 RACES PER DAY

		Course R1 North East	Course R2 East	Course R3 South East	Course R4 South	Course R5 West	Course R6 Alternate East	Course R7 South West	
Senior Mixed Single & Two-Handed, 29er	Race 1	Start	Start	Start	Start	Start	Start	Start	
		Compass (S)	Manns Point	Ships	Snapper Mark	Drum. Wharf	Long Nose	Snapper Mark	
		White Horse	Ships (S)	Compass (S)	Le Merle (S)	Clarkes Point (S)	Drum. Wharf (S)	Greenwich	
		Manns Point	Compass	Long Nose (S)	Snapper Mark	Ships (S)	Clarkes Point	Cove Street	
		Beacon	Beacon	Clarkes Point	Le Merle (S)	Beacon	Beacon	Greenwich	
		Finish	Finish	Ships	Compass (S)	Clarkes Point (S)	Finish	Compass	
	Race 2			Finish	Ships (S)	Finish		Finish	
					Finish				
		Start	Start	Start	Start	Start	Start	Start	
		Compass (S)	Manns Point	Ships	Snapper Is. (S)	Drum. Wharf	Long Nose	Snapper Mark	
		Beacon	Beacon	Compass (S)	Drum. Bay	Ships (S)	Compass	Greenwich	
		Compass (S)	Manns Point	Long Nose (S)	Snapper Island	Beacon	Drum. Wharf (S)	Cove Street	
		Beacon	Beacon	Compass (S)	Le Merle (S)	Ships (S)	Clarkes Point	Greenwich	
		Clarkes Point	Finish	Long Nose (S)	Compass (S)	Finish	Beacon	Compass	
Beacon		Finish	Ships (S)		Finish	Finish			
Finish			Finish						

FLYING 11, MIRROR	Race 1	Start	Start	Start	Start	Start	Start	Start
		Compass (S)	Manns Point	Ships	Snapper Mark	Drum. Wharf	Long Nose	Snapper Mark
		White Horse	Ships (S)	Compass (S)	Le Merle (S)	Clarkes Point (S)	Compass	Greenwich
		Ships	Compass	Long Nose (S)	Compass (S)	Beacon	Drum. Wharf. (S)	Compass
		Beacon	Beacon	Finish	Ships (S)	Clarkes Point (S)	Finish	Finish
	Finish	Finish		Finish	Finish			
	Race 2	Start	Start	Start	Start	Start	Start	Start
		Compass (S)	Manns Point	Ships	Snapper Is. (S)	Drum. Wharf	Long Nose	Snapper Mark
		Beacon	Beacon	Compass (S)	Drum. Bay	Ships (S)	Beacon	Greenwich
		Compass (S)	Ships (S)	Long Nose (S)	Snapper Island	Beacon	Clarkes Point	Cove Street
		Beacon	Beacon	Finish	Le Merle (S)	Clarkes Point (S)	Beacon	Greenwich
		Finish	Finish		Compass (S)	Finish	Finish	Compass
					Finish			Finish

All marks to Port except where indicated (S)

B4 – JUNIOR RIVER COURSES

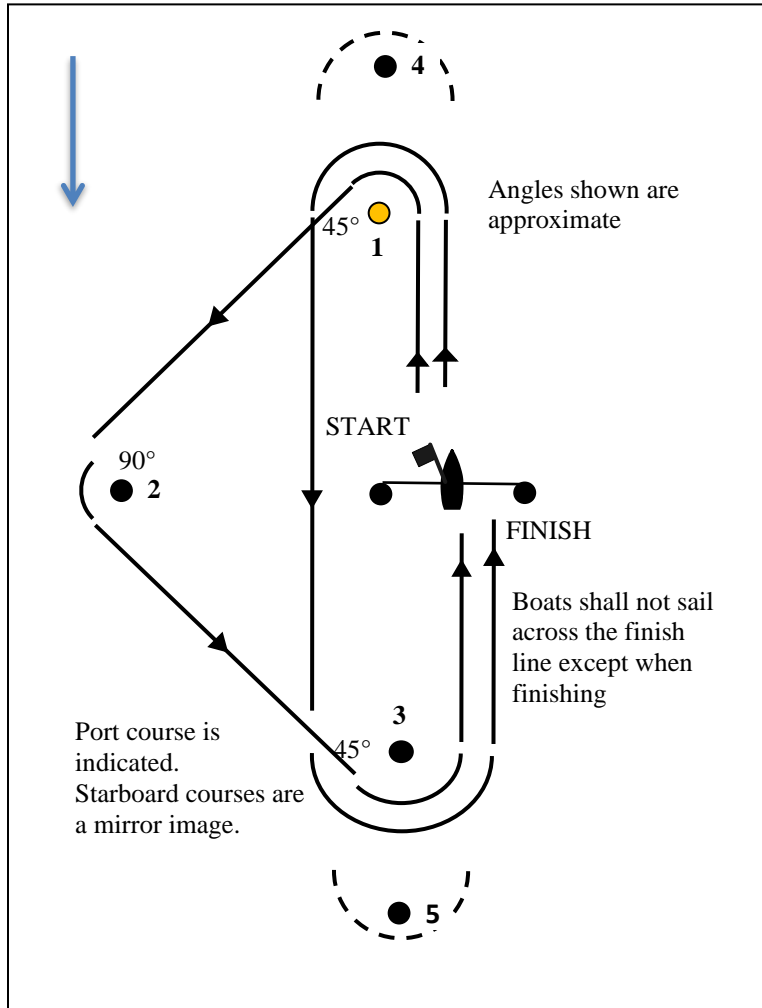
Junior Race Fleet Course R6	Junior Race Fleet Course R7
Start	Start
Greenwich	Beacon (S)
Compass	Horse Paddock (S)
Horse Paddock	Ships (S)
Greenwich	Beacon (S)
Horse Paddock **	Ships (S) **
Greenwich	Beacon (S)
Compass	Horse Paddock (S)
Horse Paddock	Ships (S)
Finish	Finish

All marks to Port except where indicated (S)

** Final rounding mark when the course is shortened before the start

Attachment B – Courses

B5 – WINDWARD-LEEWARD-TRIANGULAR COURSES



JUNIOR COURSES

Course 1	Start-1-2-3-Finish
Course 2	Start-1-2-3-1-3-Finish
Course 3	Start-1-2-3-1-3-1-2-3-Finish
Course 4	Start-1-2-3-1-3-1-2-3-1-3-Finish

SENIOR COURSES

Flying 11, Mirror, Senior Mixed Single Handed Class

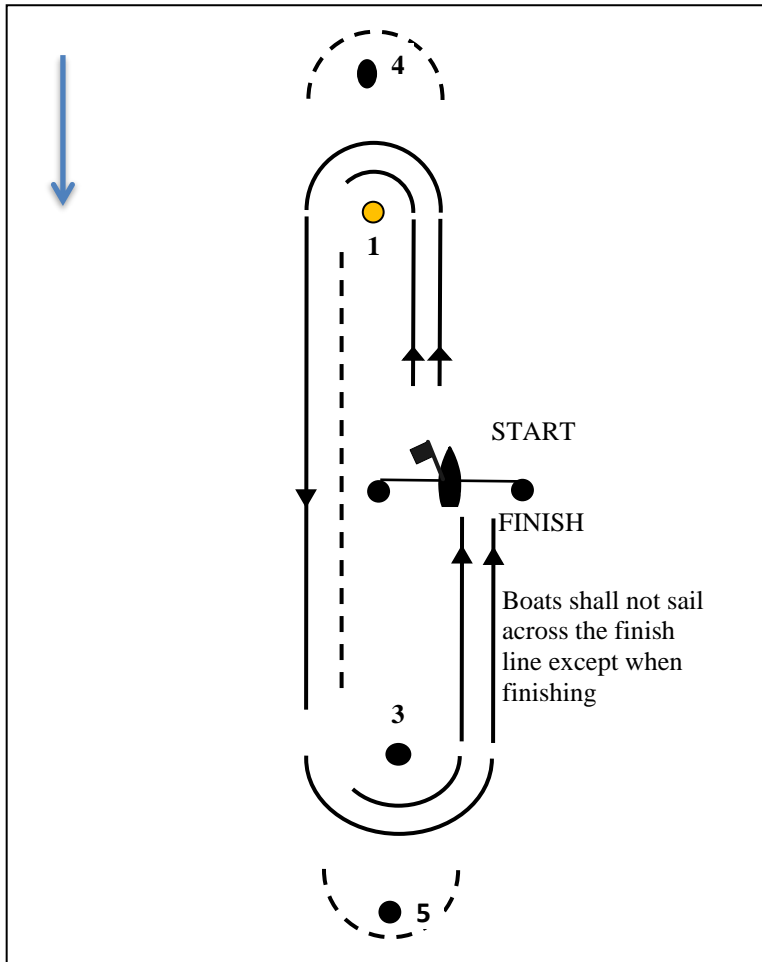
Course 1	Start-1-2-3-Finish
Course 2	Start-1-2-3-1-3-Finish
Course 3	Start-1-2-3-1-3-1-2-3-Finish
Course 4	Start-1-2-3-1-3-1-2-3-1-3-Finish

Senior Mixed Two Handed Class

Course 1	Start-4-5-Finish
Course 2	Start-4-5-4-5-Finish
Course 3	Start-4-5-4-5-4-5-Finish
Course 4	Start-4-5-4-5-4-5-4-5-Finish

Attachment B – Courses

B7 – WINDWARD-LEEWARD COURSES



JUNIOR COURSES

Course W1	Start-1-3-Finish
Course W2	Start-1-3-1-3-Finish
Course W3	Start-1-3-1-3-1-3-Finish
Course W4	Start-1-3-1-3-1-3-1-3-Finish

SENIOR COURSES

All Classes except Senior Mixed Two Handed Class

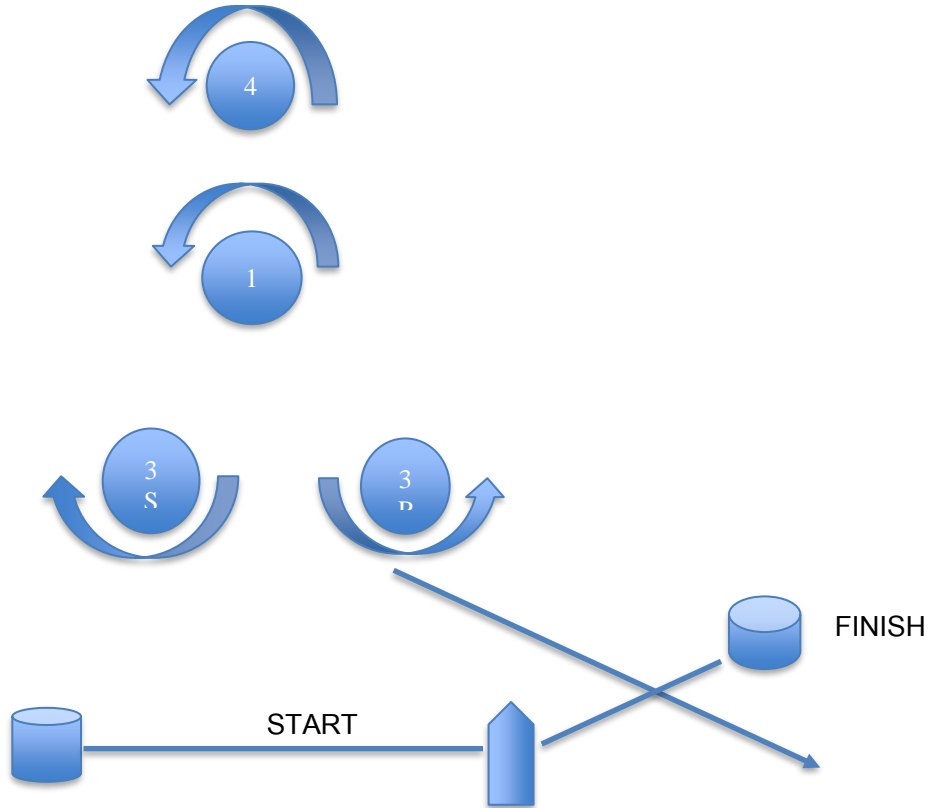
Course W1	Start-1-3-Finish
Course W2	Start-1-3-1-3-Finish
Course W3	Start-1-3-1-3-1-3-Finish
Course W4	Start-1-3-1-3-1-3-1-3-Finish

Senior Mixed Two Handed Class

Course W1	Start-4-5-Finish
Course W2	Start-4-5-4-5-Finish
Course W3	Start-4-5-4-5-4-5-Finish
Course W4	Start-4-5-4-5-4-5-4-5-Finish

Attachment B – Courses

B8 – Windward Leeward Gate Courses



JUNIOR COURSES

Course M1 Start-1-3P-Finish
Course M2 Start-1-3S/3P-1-3P-Finish
Course M3 Start-1-3S/3P-1-3S/SP-1-3P-Finish
Course M4 Start-1-3S3P-1-3S/3P-1-3S/3P-1-3P-Finish

SENIOR COURSES

All Classes except Senior Mixed Two-Handed Class

Course M1 Start-1-3P-Finish
Course M2 Start-1-3S/3P-1-3P-Finish
Course M3 Start-1-3S/3P-1-3S/3P-1-3P-Finish
Course M4 Start-1-3S/3P-1-3S/3P-1-3S/3P-1-3P-Finish

Senior Mixed Two-Handed Class

Course M1 Start-4-3P-Finish
Course M2 Start-4-3S/3P-4-3P-Finish
Course M3 Start-4-3S/3P-4-3S/3P-4-3P-Finish
Course M4 Start-4-3S/3P-4-3S/3P-4-3S/3P -4-3P-Finish